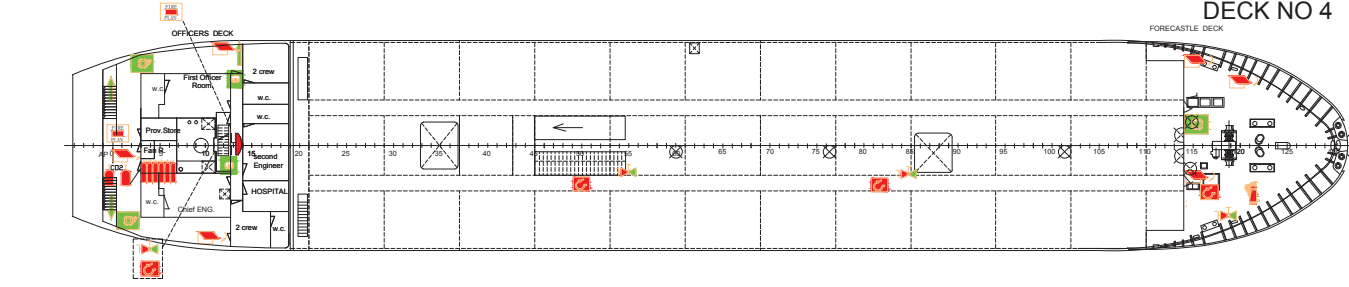
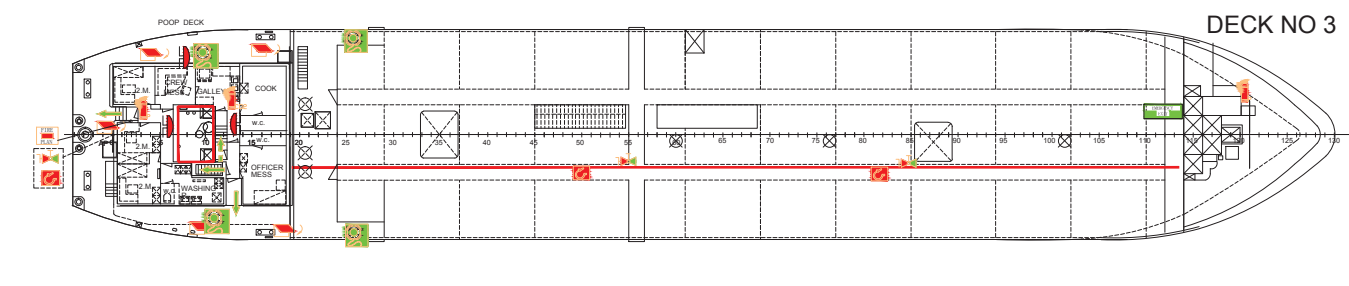


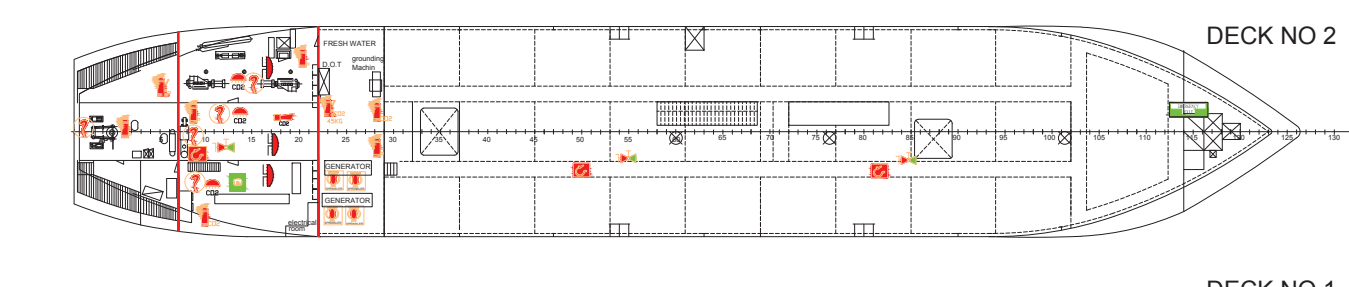
DECK NO 5



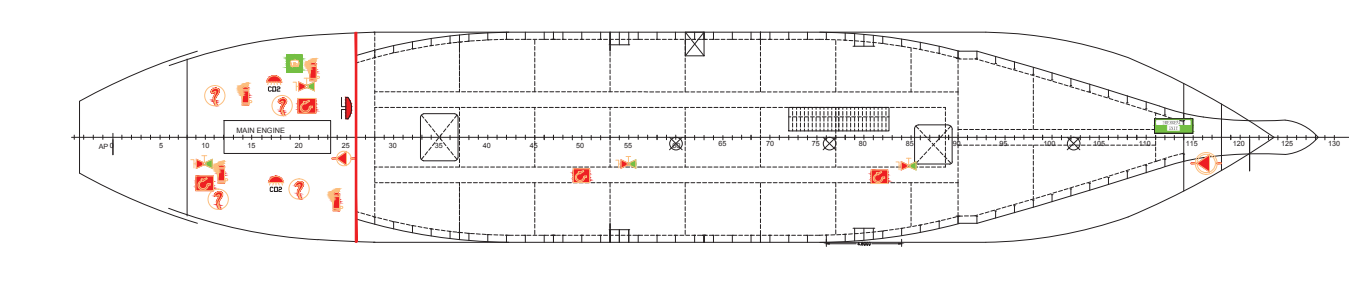
DECK NO 4



DECK NO 3



DECK NO 2



DECK NO 1

LEGEND			
No.	FIRE FIGHTING APPLIANCES	Symbol	Count
	SPACE PROTECTED BY CO2	CO2	1
1	CO2 BOTTLES COMPARTMENT	[Symbol]	1
	FIRE EXTINGUISHER SPRINKLER	[Symbol]	1
2	CO2 RELEASE STATION	[Symbol]	2
3	CO2 ALARM HORN	[Symbol]	3
	PRIMARY MEANS OF ESCAPE	[Symbol]	1
	SECONDARY MEANS OF ESCAPE	[Symbol]	1
	"A" CLASS DIVISION	[Symbol]	1
	"A" CLASS FIRE DOOR	[Symbol]	1
	EMERGENCY SWITCH BOARD	[Symbol]	1
2	S.A.P. LOCKER WITH FIREMAN'S OUTFIT	[Symbol]	2
2	FIRE PLAN LOCATION	[Symbol]	2
2	ISOLATING VALVE	[Symbol]	2
	WATER FIRE HYDRANT	[Symbol]	1
	FIRE BOX HOSE WITH NOZZLES	[Symbol]	1
1	INTER. SHORE CONNECTION	[Symbol]	1
1	FIRE FIGHTING AXES	[Symbol]	1
	SMOKE DETECTOR	[Symbol]	1
	FIRE DAMPER	[Symbol]	1
	VENTILATORS FIRE DUMPING FLAP	[Symbol]	1
2	BREATHING APPARATUS	[Symbol]	2
	EMERGENCY ESCAPE R. DEVICE	[Symbol]	1
	GENERAL ALARM BELL	[Symbol]	1
1	E. R. VENT REMOTE SHUT-OFF	[Symbol]	1
1	FUEL REMOTE SHUT-OFF	[Symbol]	1
	FIRE EXTINGUISHER (CO2)	[Symbol]	1
	FIRE EXTINGUISHER (POWDER)	[Symbol]	1
2	CO2 WHEELED F. F. EXTING.	[Symbol]	2
2	MAIN FIRE PUMP	[Symbol]	2
1	EMERGENCY FIRE PUMP	[Symbol]	1
1	EMERGENCY GENERATOR	[Symbol]	1
	FIRE DOOR SELF CLOSING	[Symbol]	1
1	REMOTE CONTROLLED FIRE PUMP	[Symbol]	1
	FLAME DETECTOR	[Symbol]	1
	EMERGENCY TELEPHONE	[Symbol]	1
1	GENERAL BUTTON ALARM	[Symbol]	1
	LIFE JACKET	[Symbol]	1
2	RADAR TRANSPONDER	[Symbol]	2
1	EPIRB	[Symbol]	1
3	HAND HELD VHF GADGETS	[Symbol]	3
2	INFLATABLE LIFE RAFT	[Symbol]	2
2	LIFE BUOYS	[Symbol]	2
2	MANOEUVER BOARD	[Symbol]	2
2	LIFE BOY WITH LINE	[Symbol]	2
2	LIFE BOY WITH LINE SELF IGNITION LIGHT	[Symbol]	2
	IMMERSION SUIT	[Symbol]	1
12	PARACHUTE RACKET	[Symbol]	12
4	SIGNAL & ROCKET	[Symbol]	4
1	EMERGENCY MEETING POINT	[Symbol]	1
	EXIT	[Symbol]	1
	EMBARKATION LAUDER	[Symbol]	1
	EMERGENCY EXIT	[Symbol]	1
2	LIFE BOAT	[Symbol]	2
	LIFE SAVING APPLIANCES	[Symbol]	1
	MANUALLY OPERATED CALL POINT	[Symbol]	1
1	HOSPITAL	[Symbol]	1

NOTE: ONE LIFE JACKET IN EACH CREW CABIN

INDEX	DESCRIPTION	DATE
DRAWING BY	Marine Engineer Hazem Saad email: hrs467@yahoo.com TL: 00961 3 919271	08/03/2013
Approved by:		
Scale	M/V YOUZARSIF-H EX/M/V UNI K	
1:200	SAFETY AND FIRE CONTROL PLAN	